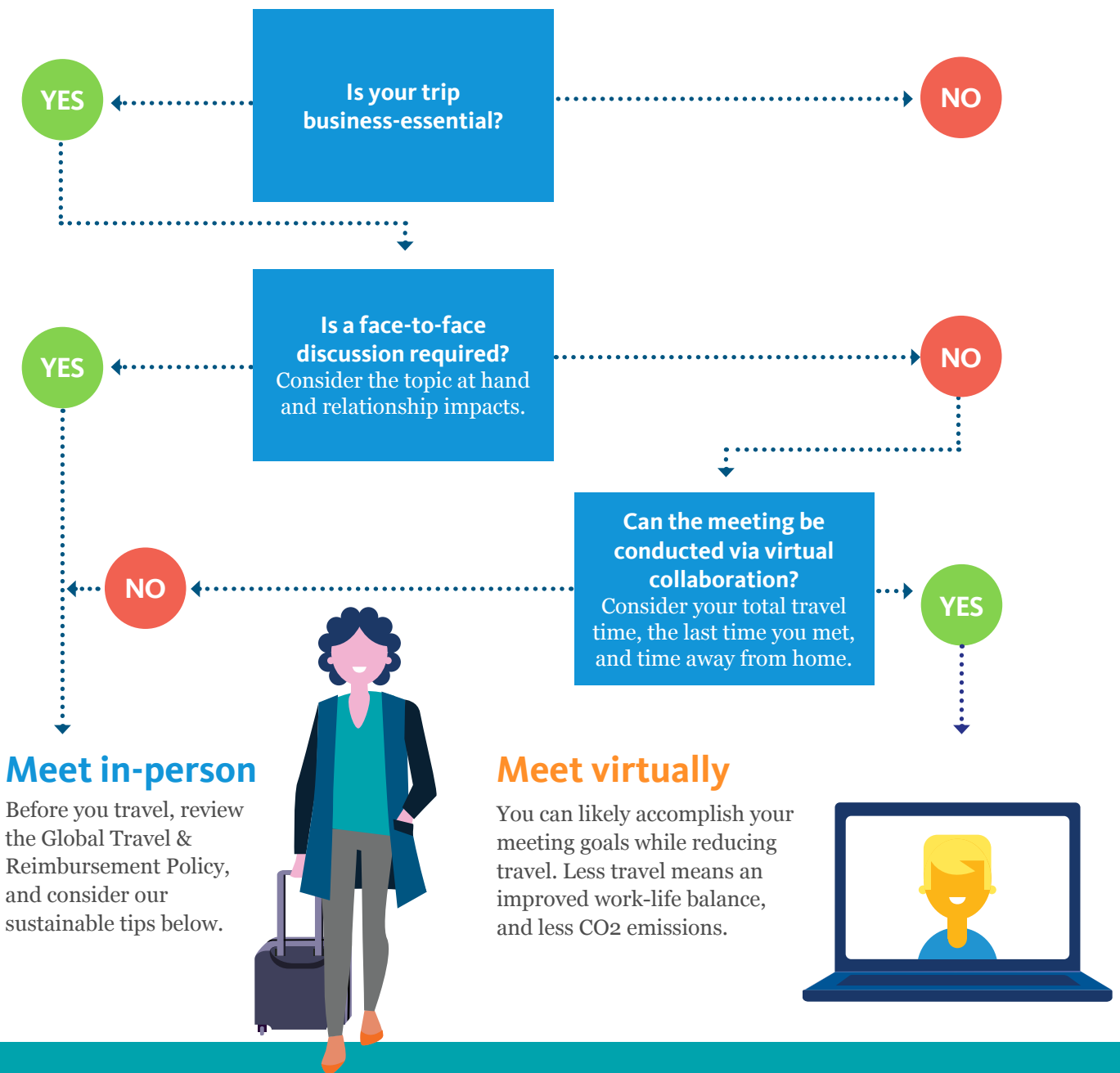


# Should I stay or should I go?

## The Power of Collaboration

Travel is an essential and fundamental element of our business. It is essential for many reasons, increasing global connectivity, internally and externally, managing relationships with clients, conducting company research, along with learning and development. When deciding whether travel is essential, be mindful of your wellness and the impact to the environment.



## Considerations for more sustainable travel

Are you able to utilize more sustainable options with less impact to our carbon emissions?  
Consider the environment and emissions and view our tips below.



### Maximize your time

If you think you'll need to travel again to the same destination, consider combining business meetings into one trip.



### Consider train, if possible

Book a rail ticket for trips less than 3 hours if it is a viable option.



### Choose a newer aircraft

A newer aircraft burns less fuel. Your agent and online booking tool will highlight the most sustainable options for you.



### Fly direct

When possible, fly direct. It's the takeoffs and landings that create the most emissions.